

ScanX® 14

scanX

VETERINARY DIGITAL IMAGING SYSTEM

Who will you trust with your move to digital X-Ray?

*With thousands of healthcare installations worldwide,
ALLPRO knows what veterinarians need.*



 **ALLPRO** IMAGING
THE IMAGING EXPERTS

PRESENTING **SCANX 14**

SCANX 14 IS AN INNOVATION IN DIGITAL IMAGING SYSTEMS, ENGINEERED TO RAPIDLY PRODUCE DIAGNOSTIC QUALITY IMAGES THAT ARE READY FOR VIEWING IN 55 SECONDS.

X-rays are an essential part of your practice. They require a substantial investment of your time, space and money. Finally, ScanX technology has delivered **the ideal solution** for the veterinary office.

SCANX 14 STREAMLINES THE ENTIRE IMAGING PROCESS

Here's How It Works.

ScanX 14 is a computed radiography system (CR). Replacing film and intensifying screens, CR utilizes phosphor storage plates (PSP) which are coated with an x-ray sensitive phosphor material. PSP are durable and reusable thousands of times. Upon exposure to x-rays, the plate stores a latent image which is scanned by ScanX 14. Easy to use, certified imaging software enhances the digital image to aid you in diagnosis. Save images to your computer for easy retrieval and huge space savings in your office.



PSPs are available in 8"x 10", 10"x 12" and 14"x 17" sizes and can be used with your standard cassettes (without intensifying screens).

....Plus It Works the Way you Work.

Use your existing x-ray equipment to expose the plate, the same way you expose film. Simply insert the plate into ScanX 14 and in a mere 55 seconds the image is ready for viewing. In fact, with **NEW In-Line Erase** you can scan and erase in one continuous cycle, within the same 55 seconds.

Your workflow remains the same. Simply expose a reusable plate instead of film.



THE FAST, AFFORDABLE, VERSATILE VETERINARY IMAGE

IMAGINE THE TIME, EFFICIENCY AND CONVENIENCE YOU'LL ADD EACH DAY

- Never again deal with film, chemistry, processor maintenance or duplicating film. No need for a darkroom...ScanX 14 operates in normal room light.
- Acquire images, accurate the first time. No need for multiple exposures, "just in case".
- Enhance images with imaging software to maximize the diagnostic information.
- Educate owners; quickly and thoroughly present treatment plans.
- ScanX technology saves you time and space with easy digital file storage and archiving. Retrieve and review patient x-rays, send them to a colleague or burn a copy on CD...at the push of a button.
- Radiographic technique is consistent with green sensitive film. Users of blue sensitive film can reduce exposure by over 50%.

WHAT DOES FILM ACTUALLY COST YOU?

8 FILMS/DAY 16 FILMS/DAY

PER FILM COSTS:		8 FILMS/DAY	16 FILMS/DAY
Film (14"x17")	\$ 1.50	\$12.00	\$ 24.00
Chemistry (Replenisher)	\$.50	\$ 4.00	\$ 8.00
Envelope	\$.25	\$ 1.00	\$ 2.00
Total Per Film Costs		\$17.00	\$ 34.00
X 250 days/ year		\$4,250.00	\$8,500.00
Add 15% for duplicating and retakes		\$4,887.50	\$9,775.00
MONTHLY COSTS:			
Chemistry	\$ 25.00		
Processor Cleaning Labor	\$ 60.00		
Waste Disposal	\$ 50.00		
	\$135.00		
12 months/year		\$1,620.00	\$1,620.00
YEARLY COSTS:			
Darkroom & Film Storage (10'x10')	\$2,000.00		
Processor Repair	\$250.00		
	\$2,250.00	\$2,250.00	\$2,250.00
Total Yearly Cost of Film Processing		\$8,757.50	\$13,645.00

MORE ACCURATE DIAGNOSES, MORE EASILY DETERMINED

- View both skeletal and soft tissue with one exposure.
- Use shorter exposure times to minimize motion artifacts.
- Images can be magnified, inverted and sharpened.
- Change contrast and brightness.
- Measurements may be calculated using line segment and angle measurement tools.



Left to right: contrast enhanced head and neck image, colorized abdomen, knee image with histogram.

IMAGING SYSTEM THAT'S JUST RIGHT FOR YOUR PRACTICE.



ENGINEERED AND MANUFACTURED IN THE U.S.A.

ALLPRO Imaging is a manufacturer of digital imaging systems and film processors for the healthcare profession.

As a division of Air Techniques, ALLPRO Imaging offers a heritage of over forty years of leadership in the medical and dental industries.

ScanX 14 is designed, sized, and priced just right for veterinary. Plug & Play set-up. Simple operation. Software specifically designed for veterinary imaging is sold separately.

...PLUS VALUABLE RECORD-KEEPING AND COMMUNICATION TOOLS

- Maintain notes and images in one file.
- Annotate image files.
- An enhanced image helps you to educate owners and to visualize your treatment plans.

HOW TO GET UP AND RUNNING

A complete system consists of the ScanX 14, certified imaging software and a computer. ScanX 14 is sold, installed and serviced through ALLPRO Imaging's long standing nationwide network of authorized dealers. To locate your authorized ALLPRO Imaging dealer, call direct: **800-247-8324, Ext. 5611.**



FOR THOUSANDS OF HEALTHCARE PROFESSIONALS,
SCANX DELIVERS THE RIGHT ANSWERS.

SWITCHING TO DIGITAL PROMPTS IMPORTANT QUESTIONS:

- **Will the results be diagnostic quality?**

Unlike film, which is a static image, digital imaging allows you to maximize the diagnostic information.

- **Will it disrupt my workflow?**

No. Simply replace your film with any of our Phosphor Storage Plates.

- **I need the benefits of ScanX NOW. Are there any reasons I should wait?**

No. ScanX is already an advanced technology; costs have remained steady and savings will be experienced immediately.

- **Where will I get help?**

ALLPRO Imaging products are sold, installed and supported by our long-established, highly trained, authorized dealer network.



1. Take an x-ray as you normally do, using a reusable phosphor plate in place of film.



2. Easily feed plate into the ScanX 14.



3. Have the image available in 55 seconds for viewing



4. Enhance the image to optimize detail for easier diagnosis and consulting.



5. Save the image to your computer and burn a CD or send over the internet to a colleague.

SCANX 14 IN-COUNTER

SPECIFICATIONS

Dimensions (WxDxH): 28 1/4" x 18 1/4" x 10" above counter, 4 3/16" below counter
 Weight: 43 lbs.
 Electrical: 115V, 60Hz
 Laser Classification: Class 1 Laser Product, Compliance with FDA HHS 21 CFR 1040.10 and IEC 60825-1
 Imaging Media: Phosphor Storage Plates 14" x 17", 10" x 12", 8" x 10"
 System includes: Power Cord and USB Cable
 Software: Sold separately

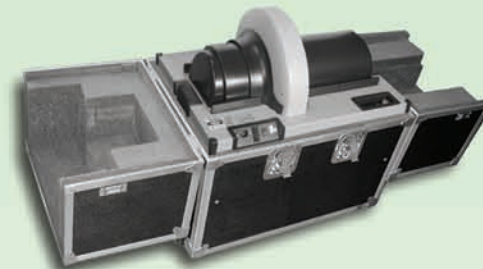


Counter not included

SCANX 14 PORTABLE

SPECIFICATIONS

Dimensions (WxDxH): 61" x 20" x 27" (open case) 31" x 20" x 28.5" (closed case)
 Weight: 113 lbs. (in case)
 Electrical: 115V, 60 Hz
 Laser Classification: Class 1 Laser Product, Compliance with FDA HHS 21 CFR 1040.10 and IEC 60825-1
 Imaging Media: Phosphor Storage Plates 14" x 17", 10" x 12", 8" x 10"
 System includes: Power Cord and USB Cable
 Software: Sold separately



SCANX 12 PORTABLE for the Equine Veterinarian accepts plate sizes 10" x 12" and 8"x10".

COMPUTER REQUIREMENTS

CPU Speed: 2.8 GHz Pentium IV
Operating System: Windows 2000 Professional with Service Pack 4 or later, or Windows XP Professional with Service Pack 1 and the KB B22603 update or later.
RAM: 1 GB
Hard Drive: 120 GB, 200 MB free disk space required to start screening
Monitor: SVGA 17", 1024 x 768 or higher resolution, contrast ratio 450:1, .22 dot pitch capability. For optimum viewing a CRT is recommended.
Video Display Adapter: 32 MB RAM
Keyboard / Mouse: Standard
Backup Device: Recommended for daily archiving
External Surge Protector: Recommended
Printer: Recommended
USB Port: Must be 1.1, 2.0 or later

Dental Veterinary Applications SCANX 12 DVM

SPECIFICATIONS

Dimensions (WxDxH): 14" x 14" x 28"
 Weight: 55 lbs.
 Electrical: 100-240 VAC
 Laser Classification: Class 1 Laser Product, Compliance with FDA HHS 21 CFR 1040.10 and IEC 60825-1
 Imaging Media: Phosphor Storage Plates intraoral Sizes 0, 1, 2, 3, 4, 10" x 12", 8" x 10"
 System includes: Power Cord and USB Cable
 Software: Sold separately



SCANX DUO

SPECIFICATIONS

Dimensions (WxDxH): 11 3/4" H x 10" W x 10 1/2" D
 Weight: 25 lbs.
 Electrical: 100 - 240V AC, 50/60 Hz
 Laser Classification: Class 1 Laser Product, Compliance with FDA HHS 21 CFR 1040.10 and IEC 60825-1
 Imaging Media: Two processing slots accept Phosphor Storage Plates. Intraoral sizes 0, 1, 2, 3, 4
 System includes: Power Cord and USB Cable
 Software: Sold separately



SCANX DVM for larger volume users accepts all intraoral sizes from No. 0 to 4 occlusal.



For more information or to contact an authorized ALLPRO dealer near you, call 1-800-247-8324, Ext. 5611 or visit www.allproimaging.com