



scan▶x fit



**ScanX Fit™ and
ScanX Quantum™ Digital Imaging
Compact, Affordable, Versatile
Imaging For All Of Your
Veterinary Imaging Applications.**

scan▶x QUANTUM



 **ALLPRO** IMAGING

Full Body Images? Or Full Body and Dental Imaging Capability? Choose a ScanX System to Suit Your Specific Practice Needs.



ScanX Fit. A dependable and affordable digital system for full body images.

The ScanX Fit produces diagnostic quality digital images in all sizes, 8" x 10", 10" x 12" and 14" x 17". ScanX Fit is easy to learn and operate, and set-up in your practice is quick and easy. ScanX Fit produces detail-rich, diagnostic quality digital images in just seconds and is the perfect solution for veterinary practices looking for a simple, affordable upgrade to digital. Or, ScanX Fit is an excellent addition to your practice if you currently own a dental imaging system and are interested in acquiring an affordable body imaging system to complete your digital suite of products.



Easy, dependable operation.

ScanX Fit and ScanX Quantum Digital Imaging systems are especially easy to use. Imaging procedures are familiar because the ScanX systems build on techniques you already use with film. Obtain high-quality digital images in just three simple steps—Expose, Insert and View. ScanX produces a digital image by scanning durable, reusable, phosphor storage plates (PSPs) coated with an X-ray sensitive photostimulable material. Expose the PSP with your existing X-ray system. The PSP stores the latent image, which is then scanned by ScanX. After scanning, the image is available for viewing on your monitor in seconds. As an added benefit, images may be optionally erased in a single continuous cycle by the patented in-line erase feature. Plates are then conveniently ready for reuse. ScanX Fit accepts all brands of PSPs in all standard sizes up to 14" x 17". And, ScanX Quantum accepts all brands of PSPs in sizes 8" x 10", 10" x 12", 14" x 17" and all dental sizes 0, 1, 2, 3, 4 and 6.

Compact and durable.

Unique engineering innovations make the ScanX Fit and ScanX Quantum extremely durable and compact. A cushioned, extruded aluminum frame is extremely strong yet lightweight. And, sturdy rubberized feet add stability. The small footprint saves counter space. Or, opt for convenient wall mounting for even greater space savings. And, mobile clinics will appreciate the optional, built-in rechargeable battery and DC power port.

Save Green. Go Green.

Upgrading to digital with the ScanX Fit or ScanX Quantum is a wise investment that will enhance your practice and improve your bottom line. These systems pay for themselves and will return a continuous financial advantage to you in only a few months time. There is no more need for chemicals, processor maintenance, scheduled cleanings or a darkroom. Not to mention chemical storage and disposal. As a result, going digital with ScanX has a tremendously positive impact on the environment.

Enhance images and communication.

Digitally enhanced radiographs maximize diagnostic information. Using imaging software, images can be magnified, inverted, sharpened and enlarged. Easily change brightness and contrast and window level. Make measurements using line segment and angle measurement tools and maintain notes and images in one file. Images can be electronically filed or shared with other professionals. Enhanced visuals help to educate patients and you can create take home reports.

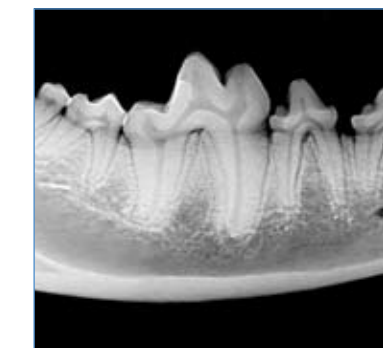
ScanX Fit and ScanX Quantum at a glance:

- ▶ Portable, compact systems with a small footprint. Can be conveniently wall-mounted for even greater space savings.
- ▶ Finely detailed digital images help you to see even the smallest details.
- ▶ Customizable settings enable optimum image quality for your specific application.
- ▶ Accepts any brand of phosphor storage plates in standard sizes up to 14" x 17". ScanX Quantum offers the additional advantage of processing dental images in all sizes.
- ▶ Easy to setup, operate and train staff. And, with the ScanX Quantum, you empower staff to independently complete revenue generating dental imaging procedures.
- ▶ Patented, built-in eraser with manual or auto erase function. Plates are immediately ready for reuse.
- ▶ Operates in normal room lighting; your darkroom is eliminated.
- ▶ Economical and environmentally friendly. Eliminate film, chemicals, processor maintenance and cleaning, chemical storage, disposal and your darkroom.
- ▶ Operates with the imaging software you choose.
- ▶ Cushioned, lightweight extruded aluminum frame.
- ▶ Rubberized feet add stability.
- ▶ Built-in rechargeable battery option and DC power port. Useful features for mobile clinics.



ScanX Quantum™ A unique digital advantage for your practice. Full body and dental imaging all in one.

The ScanX Quantum is the only digital imaging system capable of producing diagnostic quality digital images in all standard sizes up to 14" x 17" and all dental sizes. ScanX Quantum is easy to learn and operate, and set-up is quick and simple. ScanX Quantum produces diagnostic quality digital images in just seconds. Imagine the time and efficiency you will add to each day with an upgrade to digital with the ScanX Quantum. ScanX Quantum is the perfect solution for veterinary practices looking to upgrade to digital and increase revenue by adding dental X-ray examinations to their routines.



Compact, Affordable, Versatile Digital Imaging.

Call 888-862-4050 to schedule a demonstration or visit www.allproimaging.com for more information.

Specifications

Dimensions:	15 ½ W x 18 L x 14 H
Weight:	40 lbs. (without battery) 42 lbs. (with battery)
Electrical:	50/60 Hz 110-240Vac.
Laser Classification:	Class I Laser Product. Compliance with FDA HHS 21 CFR 1040.10 and IEC 60825-1
Imaging Media:	ScanX Fit Phosphor Storage Plates: 8" x 10" x 10" x 12", 14" x 17" ScanX Quantum, Phosphor Storage Plates: 8" x 10", 10" x 12", 14" x 17", all dental sizes 0 through 6
System Includes:	Power Supply and USB Cable
Software:	Compatible, third party software recommended (not included)
Part Numbers:	ScanX Fit (w/o battery) D5000-F ScanX Fit (w/battery) D5000-FB ScanX Quantum (w/o battery) D5000-Q ScanX Quantum (w/battery) D5000-QB

Computer Recommendations

CPU Speed:	3.0 GHz Intel CORE2
Operating System:	Microsoft Windows XP Professional (for a 32-bit Intel processor with Service Pack 2 or later or for a 64-bit Intel x64 processor) Microsoft Vista Business, Enterprise, or Ultimate (for a 32-bit Intel processor with Service Pack 1 or later or for a 64-bit Intel x64 processor with Service Pack 1 or later)
RAM:	2 GB
Hard Drive:	500 GB
Optical Drive:	Optical drive that is CD Rom compatible
Monitor:	SVGA 20", 1024x768 or higher resolution, contrast ratio 450:1, .22 dot pitch recommended
Video Display Adapter:	32 MB RAM
Keyboard / Mouse:	Standard keyboard and mouse
USB Port/Version:	USB 2.0 or later
Other:	Surge protector and backup device



The ScanX digital imaging system was developed by ALLPRO Imaging, a leading manufacturer of imaging systems dedicated to the medical, veterinary, security and industrial markets for nearly 50 years. ALLPRO maintains a 200,000 square-foot manufacturing facility in New York, and a network of authorized ScanX Fit and ScanX Quantum dealers.



1295 Walt Whitman Road
Melville, New York 11747-3062
Phone: 516.433.7676 Fax: 516.433.7684
Toll Free in the U.S. and Canada: 888-862-4050

Authorized ALLPRO Imaging Dealer

